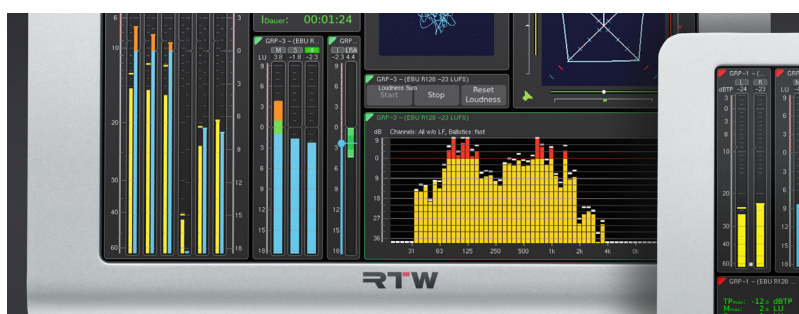
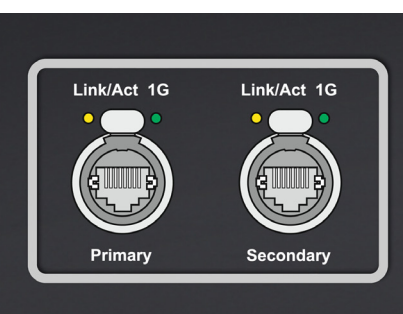


Addendum to TouchMonitor Manual

TM7-Dante | TM9-Dante



Addendum to TouchMonitor Manual

TM7-Dante | TM9-Dante



Please carefully **read** the following manual, **understand** all instructions and **act** step by step as requested to prevent any damage to the device, to prevent any hazards, or not to violate any laws.



NOTE - This manual is an addendum to the common operating manual for the TouchMonitor units. The knowledge of the content, especially the safety information, is required and constitutes the basis for the following additional descriptions.



WARNING - In order to observe the EMC values, a **CAT-7 S/FTP** cable with an **etherCON** connector **NE8MX-6-T** or **NE8MX6** shall mandatory be used. According to the assembly instructions of the connector, the **cable shield** shall be wired in the way that it has **connection to the connector housing**!

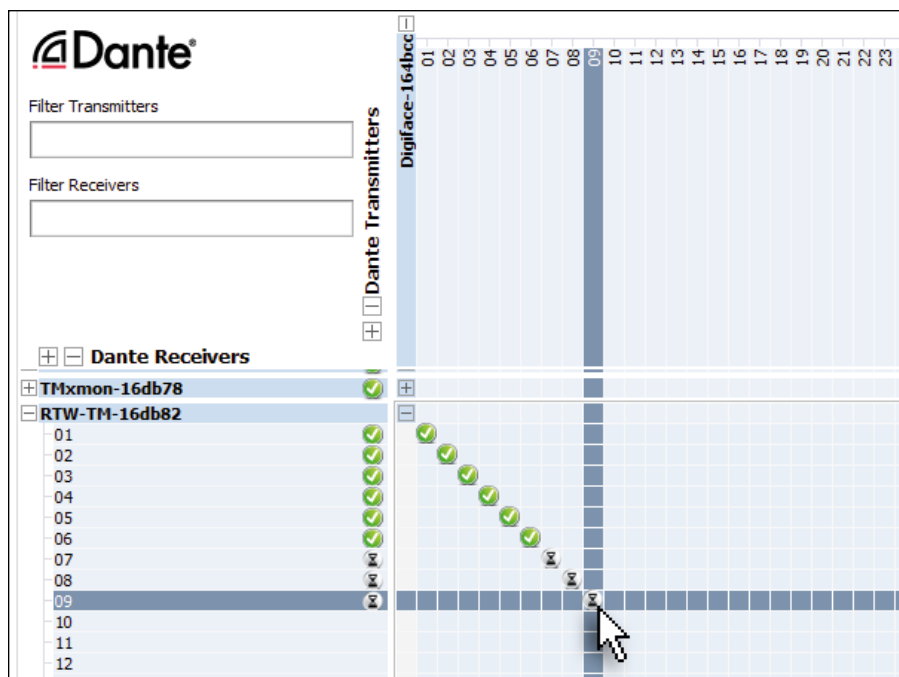
Precondition

As any other device in a network, also a TouchMonitor unit with Dante™ interface (TM-Dante) has to be set up for a Dante AoIP network. Only then the TM-Dante is able to receive and display signals from a network.

We assume, that the Dante network administrator will integrate the TM-Dante via Audinate's Dante Controller and will make the required assignments from the sources to the 32 available sinks of the TM-Dante.



NOTE - Please ask the Dante network administrator to tell you which signal source is assigned to which input channel.



Operation


If these preconditions are given and the TM-Dante is connected to the Dante network, you can start creating presets, define audio groups and assign input signals.



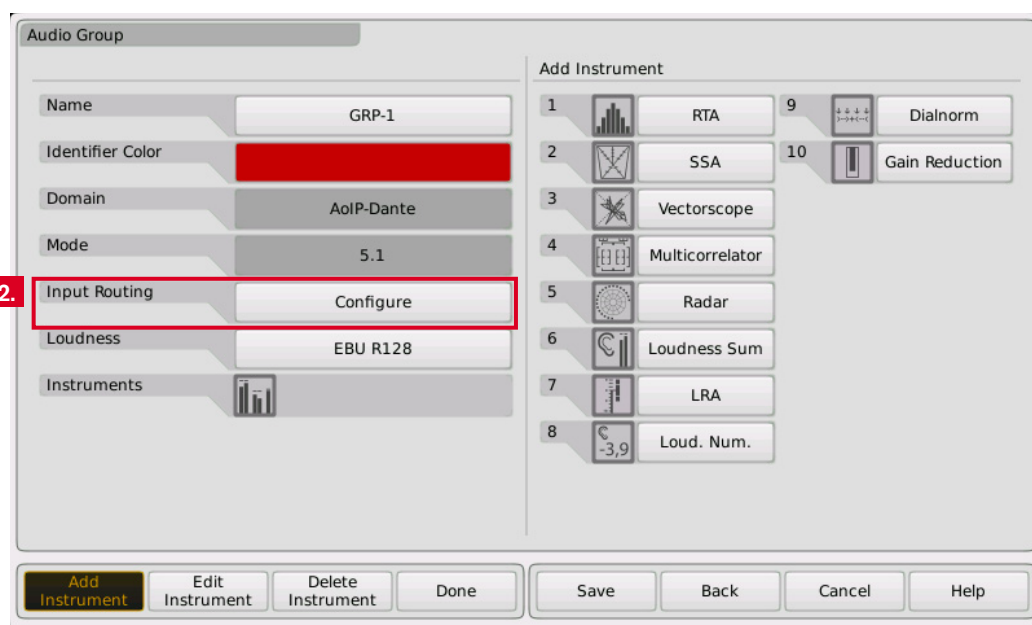
NOTE - In each new created audio group of a preset, always the first Dante input signals in the order will be assigned to the channels for display. Therefore, please always verify the input routing and adjust the assignment if necessary.

Proceed as follows:

1. As described in the operating manual, open the menu system on your TouchMonitor and create a new preset.

 Further information on how to create and manage presets can be found in the operating manual of your device.

2. Create a new **Audio Group** and define the operation mode (e. g. 5.1). **AoIP-Dante** is set as **Domain**, this cannot be changed. Touch **Configure** in the **Input Routing** section to perform the input routing.



Operation (continued)

- One by one touch the buttons in the **Input** column and select the corresponding Dante signals, which should be displayed on these input channels.



NOTE - The channel designations **01, 02, ..., 32** shown in this documentation correspond to the initial designations in the Dante network. When these channel designations are renamed by the network administrator, the changed channel names will also appear in the routing of the TouchMonitor.

Channel	Input	Name
L	01	L
R	02	R
C	03	C
LFE	04	LFE
LS	05	LS
RS	06	RS

Buttons: Save, Back, Cancel, Help

In the following first example we assumed that the first six Dante channels can be assigned to a 5.1 Surround display.

Channel	Input	Name
L	01	L
R	02	R
C	03	C
LFE	04	LFE
LS	05	LS
RS	06	RS

Selection: Input

01	02	03	04
05	06	07	08
09	10	11	12
13	14	15	16
17	18	19	20
21	22	23	24
25	26	27	28
29	30	31	32

Buttons: Save, Back, Cancel, Help



Operation (continued)

In the second example we assumed that the Dante channels 7 to 14 belong to a 7.1 DD+ setup.

The screenshot shows the 'Routing' dialog box. On the left, there is a table with columns 'Channel', 'Input', and 'Name'. On the right, there is a 'Selection: Input' grid showing a 4x8 matrix of input numbers from 01 to 32. A red box highlights the grid. A red arrow points from the '10' in the grid to the 'Input' field of the 'LFE' channel in the table.

Channel	Input	Name
L	07	L
R	08	R
C	09	C
LFE	10	LFE
LSR	05	LSR
RSR	06	RSR
LS	07	LS
RS	08	RS

Selection: Input

01	02	03	04
05	06	07	08
09	10	11	12
13	14	15	16
17	18	19	20
21	22	23	24
25	26	27	28
29	30	31	32

Buttons: Save, Back, Cancel, Help

The screenshot shows the 'Routing' dialog box. On the left, there is a table with columns 'Channel', 'Input', and 'Name'. On the right, there is a 'Selection: Input' grid showing a 4x8 matrix of input numbers from 01 to 32. A red box highlights the grid. A red arrow points from the '14' in the grid to the 'Input' field of the 'RS' channel in the table.

Channel	Input	Name
L	07	L
R	08	R
C	09	C
LFE	10	LFE
LSR	11	LSR
RSR	12	RSR
LS	13	LS
RS	14	RS

Selection: Input

01	02	03	04
05	06	07	08
09	10	11	12
13	14	15	16
17	18	19	20
21	22	23	24
25	26	27	28
29	30	31	32

Buttons: Save, Back, Cancel, Help

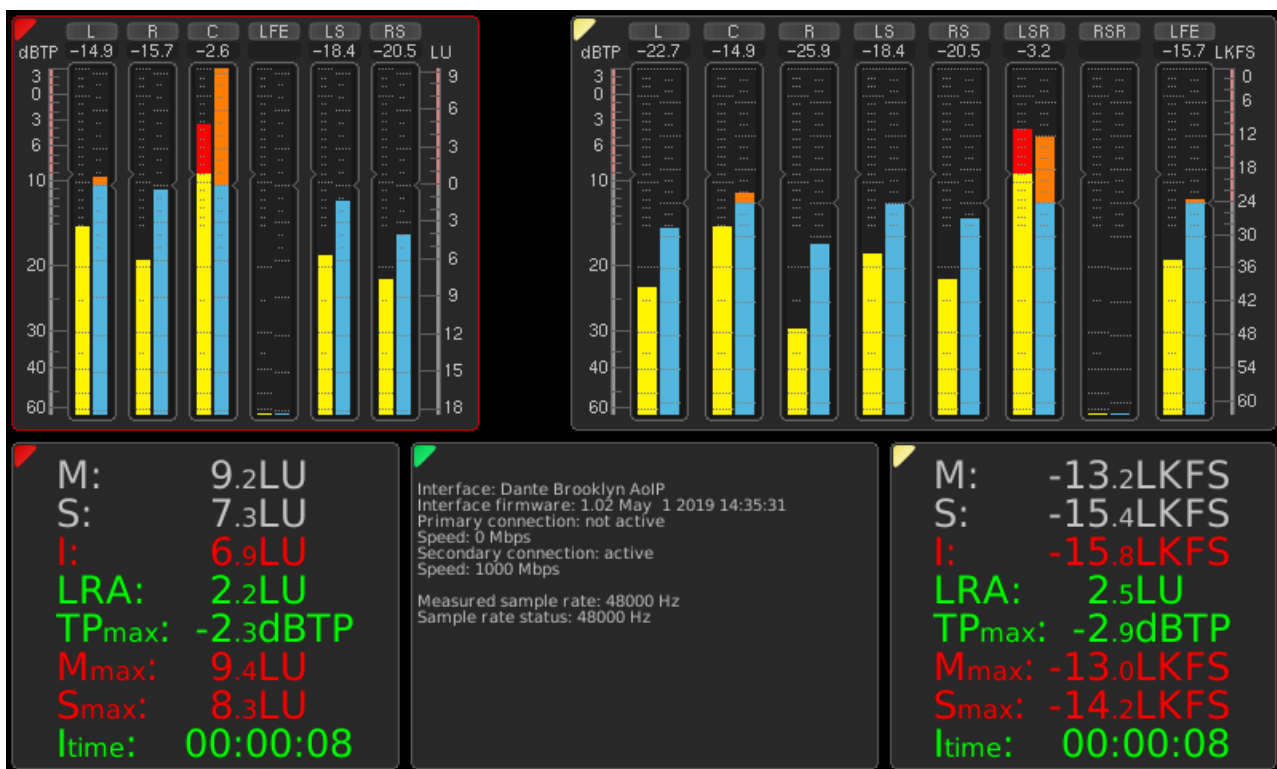


NOTE - In one preset, up to 32 channels in several audio groups can be defined. Up to 8 channels can be assigned to one audio group.

- As described in the operating manual, add the instruments you need to the audio groups and place them on the screen (**View**). Create a Non-Audio Group, if you want to activate the network status instrument and place it on the screen. Save your preset.
- Now, your TM-Dante is ready to measure and display signals from a Dante network.**

Example

You can see a possible arrangement of the exemplarily created audio groups (left 5.1, right 7.1 DD+) as described in this manual, each extended with the Loudness Numeric instrument. In the middle you find a non-audio group with the network status display.



© 06/2019 | RTW GmbH & Co. KG | Changes without prior notice | Dante is a registered trademark of Audinate Pty